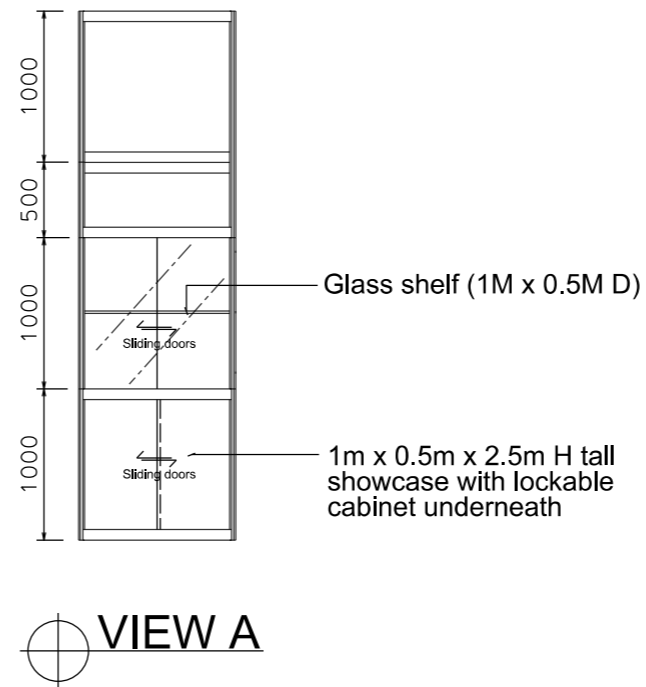
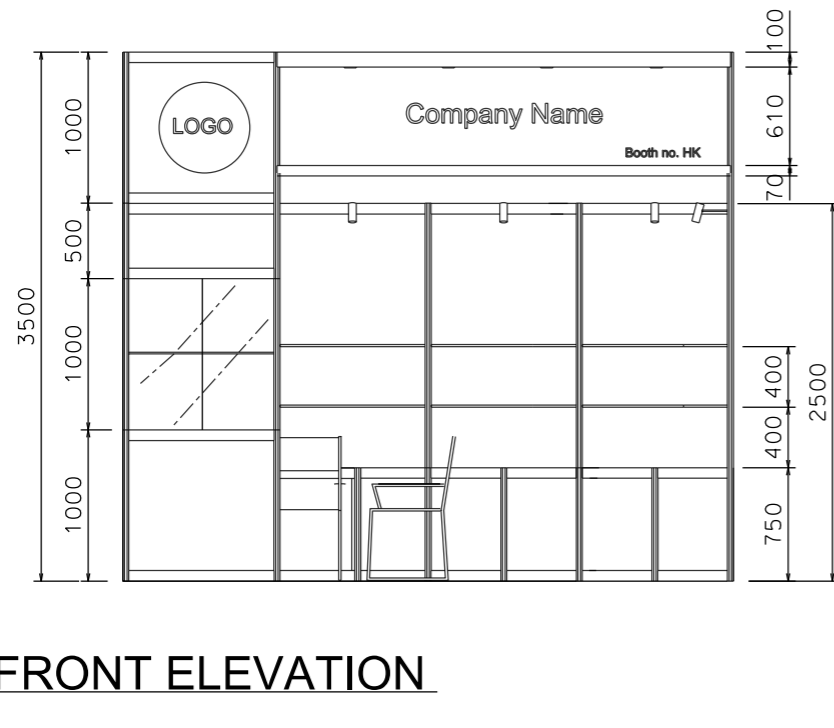
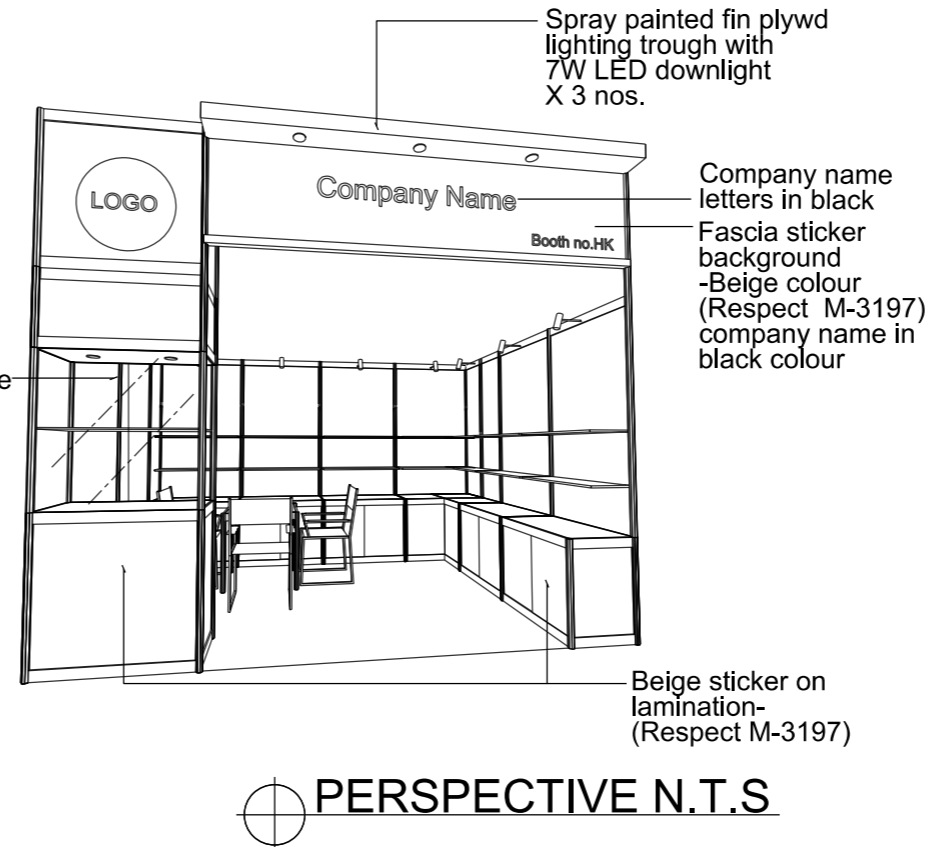
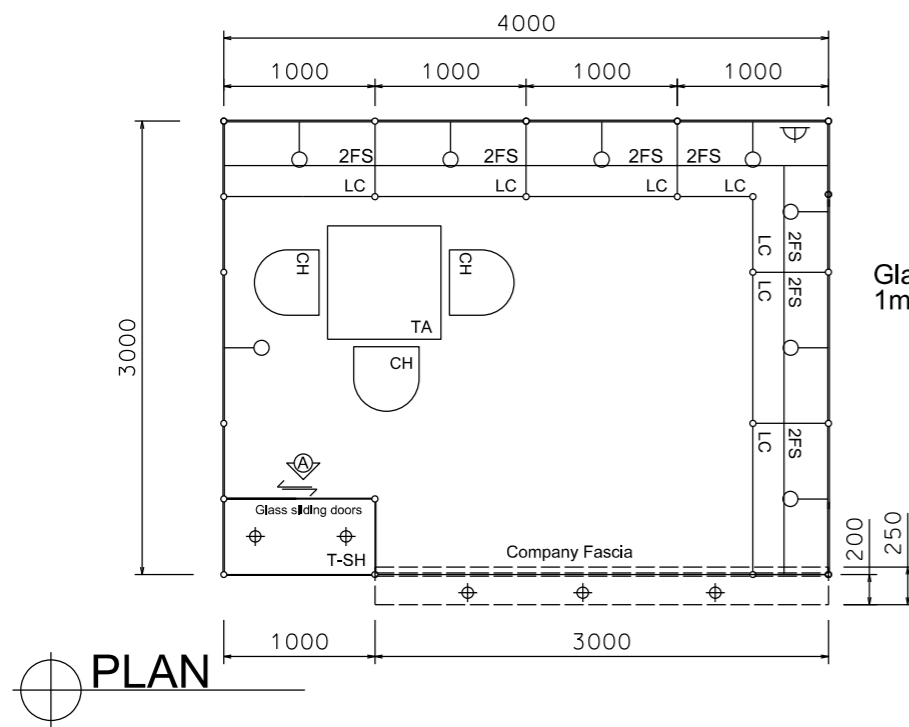


Premium Booth 4mW x 3mD One side open

SD-A-12
4mW x 3mD x 3.5mH



BOOTH SPECIFICATION		QTY
	Tall showcase in beige sticker lamination, 1 layer of glass shelf, 2x 7W LED downlights	1
	Lockable cabinet in beige sticker lamination (1mL x 0.5mD x 0.75mH)	6.5
	Wooden shelf (flat) (1mL x 0.3mD)	14
	Square meeting table (0.7m X0.7m x 0.75mH)	1
	Black leather chair	3
	13W LED Lamp Longarmed Spotlight (yellow)	8
	7W LED light (for fascia)	3
	500w Square pin power socket	1
	Company Logo	1

FILE PATH - L:\Local Fair Premium Booth 2011\SD-Layouts\SD-A layout\SD-A-Layout-New.dgn



NOTES UNLESS OTHERWISE SPECIFIED ALL DIMENSIONS ARE IN MM.

.....
.....
.....

REVISION
09-02-2009
18-05-2009
15-07-2009
21-01-2010
08-01-2019

DATE: 08-01-2019
SCALE: 1 : 50 (A3)
DRAWN BY: ..
CHECKED BY:

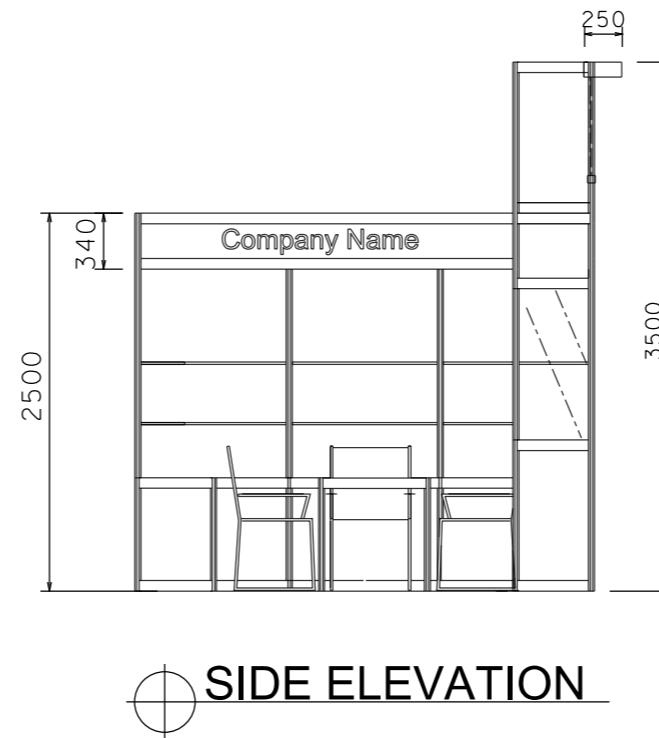
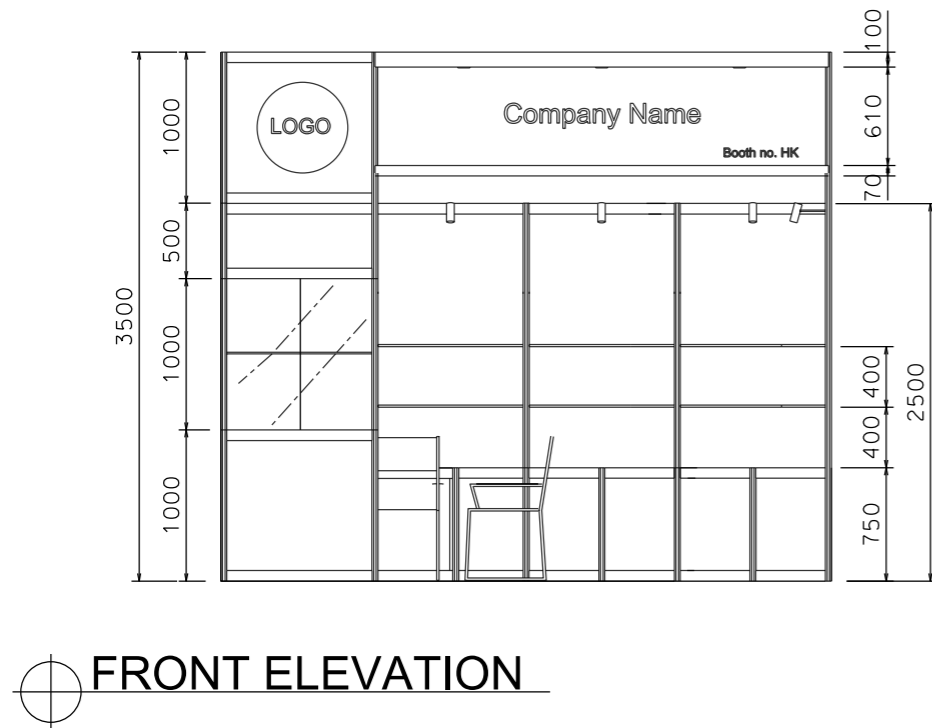
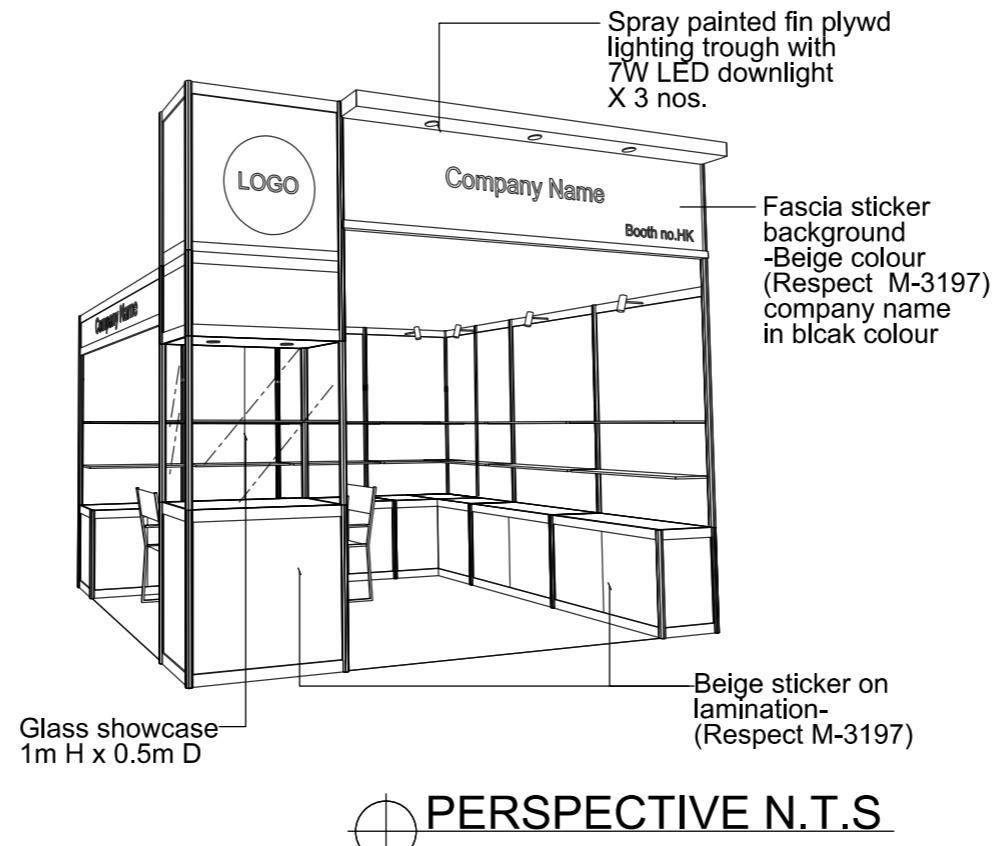
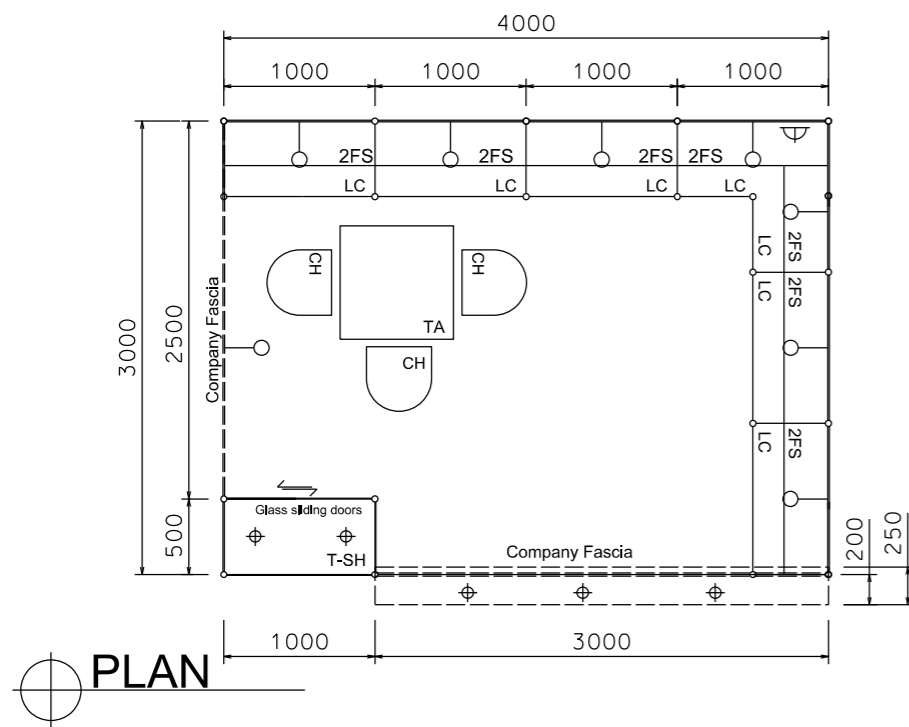
TITLE
Premium Booth SD-A-12

PROJECT
PREMIUM BOOTH
4m x 3m
DATE: XXXXXXXX

SHEET
SD-A02

Premium Booth 4mW x 3mD Left Corner Booth

SD-A-12-L Cnr
4mW x 3mD x 3.5mH



BOOTH SPECIFICATION		QTY
	Tall showcase in beige sticker lamination, 1 layer of glass shelf, 2x 7W LED downlights	1
	Lockable cabinet in beige sticker lamination (1mL x 0.5mD x 0.75mH)	6.5
	Wooden shelf (flat) (1mL x 0.3mD)	14
	Square meeting table (0.7m X0.7m x 0.75mH)	1
	Black leather chair	3
	13W LED Lamp Longarmed Spotlight (yellow)	8
	7W LED light (for fascia)	3
	500w Square pin power socket	1
	Company Logo	1

FILE PATH - L:\Local Fair Premium Booth 2011\SD-Layouts\SD-A-Layout-New.dgn



NOTES UNLESS OTHERWISE SPECIFIED ALL DIMENSIONS ARE IN MM.

.....
.....
.....

.....
.....
.....

REVISION
09-02-2009 .
18-05-2009
15-07-2009
21-01-2010
08-01-2019

DATE: 08-01-2019
SCALE: 1 : 50 (A3)
DRAWN BY: ..
CHECKED BY:

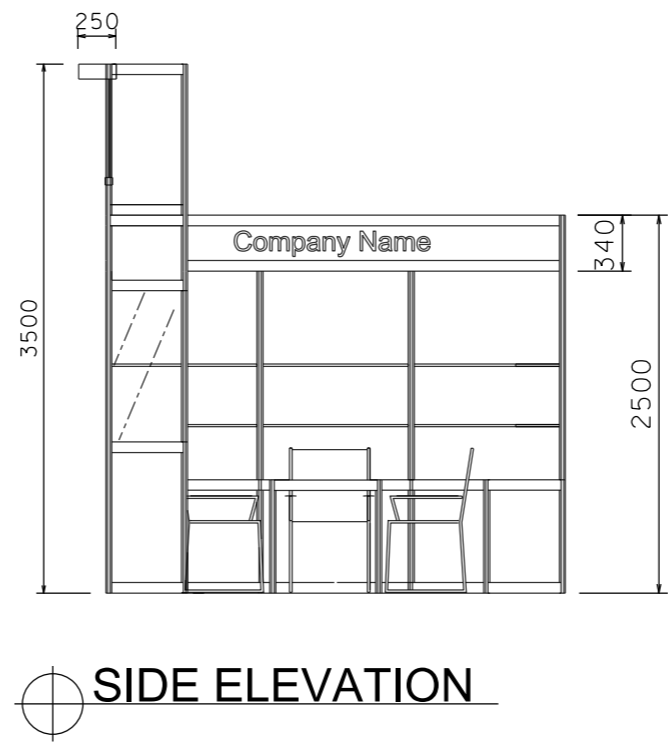
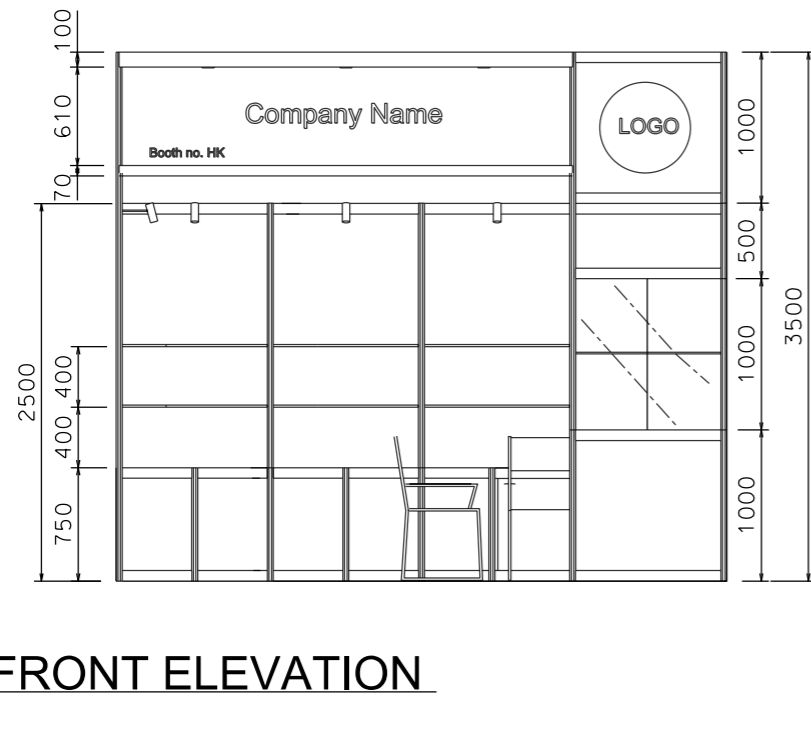
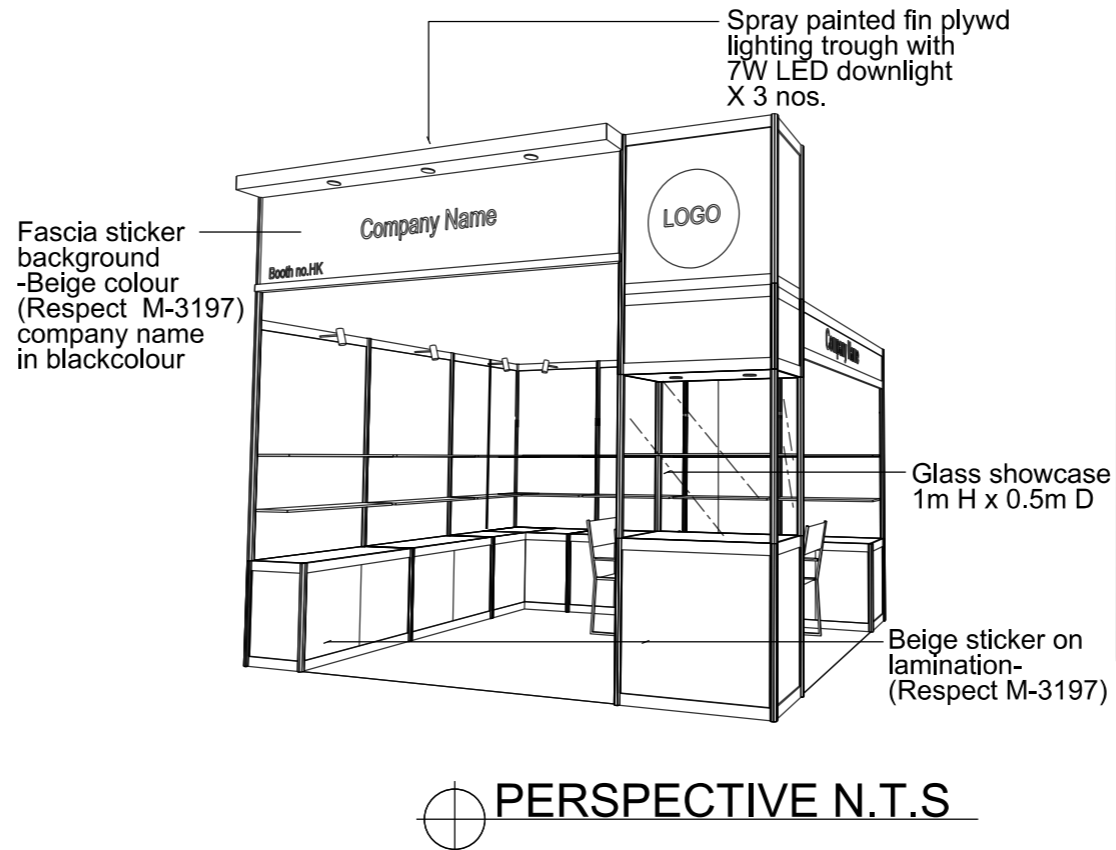
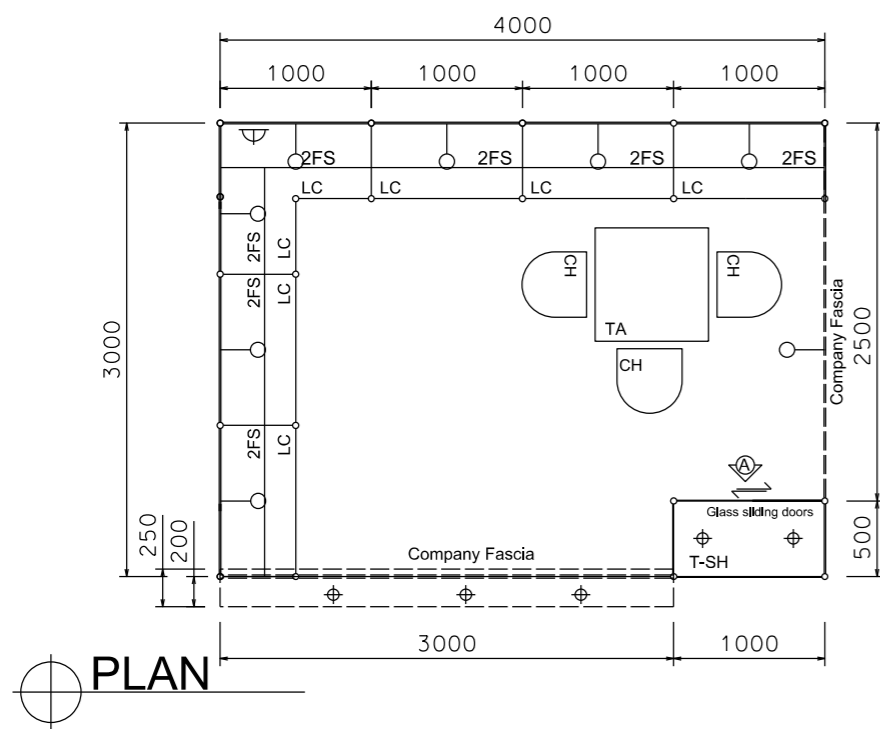
TITLE
Premium Booth
SD-A-12
L Corner

PROJECT
PREMIUM BOOTH
4m x 3m Corner
DATE: XXXXXXXX

SHEET
SD-A02a

Premium Booth 4mW x 3mD Right Corner Booth

SD-A-12-R_Cnr
4mW x 3mD x 3.5mH



BOOTH SPECIFICATION		QTY
	Tall showcase in beige sticker lamination, 1 layer of glass shelf, 2x 7W LED downlights	1
	Lockable cabinet in beige sticker lamination (1mL x 0.5mD x 0.75mH)	6.5
	Wooden shelf (flat) (1mL x 0.3mD)	14
	Square meeting table (0.7m X0.7m x 0.75mH)	1
	Black leather chair	3
	13W LED Lamp Longarmed Spotlight (yellow)	8
	7W LED light (for fascia)	3
	500w Square pin power socket	1
	Company Logo	1

FILE PATH - L:\Local Fair Premium Booth 2011\SD-Layouts\SD-A layout\SD-A-Layout_New.dgn



NOTES UNLESS OTHERWISE SPECIFIED ALL DIMENSIONS ARE IN MM.

.....

.....

.....

REVISION

09-02-2009 .

18-05-2009

15-07-2009

16-07-2009

21-01-2010

08-01-2019

DATE: 08-01-2019

SCALE: 1 : 50 (A3)

DRAWN BY: ..

CHECKED BY:

TITLE

Premium Booth SD-A-12 R Corner

PROJECT

PREMIUM BOOTH 4m x 3m Corner

DATE: XXXXXXXX

SHEET

SD-A02b